

MATERIALE

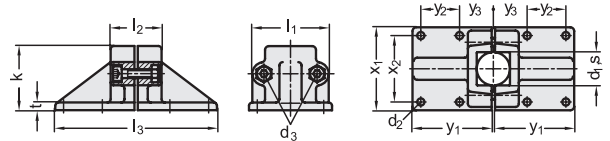
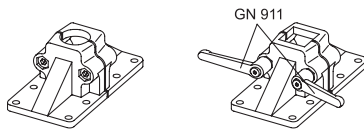
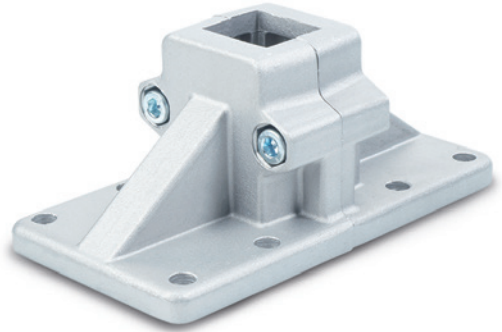
Alluminio, finitura mat.
Viti e dadi in acciaio INOX AISI 304.

ESECUZIONI STANDARD

- **GN 167-B**: per tubi tondi.
 - **GN 167-V**: per tubi quadrati.
- Suffissi per finitura superficiale:
- **BL**: colore naturale.
 - **SW**: rivestimento resina epossidica resistente a raggi UV, colore nero RAL 9005.

CARATTERISTICHE E APPLICAZIONI

Il foro di fissaggio delle basi per morsetti di collegamento GN 167 consente l'impiego ottimale con i tubi GN 990 (vedi pag. 1368).
La vite di bloccaggio d3 può essere sostituita dal kit GN 911 (vedi pag. 1372).



GN 167-B

| Codice | Descrizione | d1 Foro | d2 | d3 | k | l1 | l2 | l3 | t | x1 | x2 | y1 | y2 | y3 | d3 Kit di serraggio | ⚖ |
|----------|-----------------|------------|----|-----|----|----|----|-----|----|-----|----|-----|----|----|------------------------|------|
| GN.50111 | GN 167-B20-2-BL | 20 | 7 | M8 | 58 | 69 | 46 | 146 | 7 | 75 | 60 | 72 | 35 | 30 | GN 911-M8-40 | 394 |
| GN.50131 | GN 167-B25-2-BL | 25 | 7 | M8 | 58 | 69 | 46 | 146 | 7 | 75 | 60 | 72 | 35 | 30 | GN 911-M8-40 | 388 |
| GN.50151 | GN 167-B30-2-BL | 30 | 7 | M8 | 58 | 69 | 46 | 146 | 7 | 75 | 60 | 72 | 35 | 30 | GN 911-M8-40 | 384 |
| GN.50171 | GN 167-B40-2-BL | 40 | 11 | M10 | 91 | 98 | 70 | 219 | 14 | 115 | 90 | 108 | 50 | 45 | GN 911-M10-63 | 1222 |
| GN.50191 | GN 167-B42-2-BL | 42 | 11 | M10 | 91 | 98 | 70 | 219 | 14 | 115 | 90 | 108 | 50 | 45 | GN 911-M10-63 | 1214 |
| GN.50211 | GN 167-B45-2-BL | 45 | 11 | M10 | 91 | 98 | 70 | 219 | 14 | 115 | 90 | 108 | 50 | 45 | GN 911-M10-63 | 1194 |
| GN.50231 | GN 167-B48-2-BL | 48 | 11 | M10 | 91 | 98 | 70 | 219 | 14 | 115 | 90 | 108 | 50 | 45 | GN 911-M10-63 | 1172 |
| GN.50251 | GN 167-B50-2-BL | 50 | 11 | M10 | 91 | 98 | 70 | 219 | 14 | 115 | 90 | 108 | 50 | 45 | GN 911-M10-63 | 1154 |
| GN.50116 | GN 167-B20-2-SW | 20 | 7 | M8 | 58 | 69 | 46 | 146 | 7 | 75 | 60 | 72 | 35 | 30 | GN 911-M8-40 | 394 |
| GN.50136 | GN 167-B25-2-SW | 25 | 7 | M8 | 58 | 69 | 46 | 146 | 7 | 75 | 60 | 72 | 35 | 30 | GN 911-M8-40 | 388 |
| GN.50156 | GN 167-B30-2-SW | 30 | 7 | M8 | 58 | 69 | 46 | 146 | 7 | 75 | 60 | 72 | 35 | 30 | GN 911-M8-40 | 384 |
| GN.50176 | GN 167-B40-2-SW | 40 | 11 | M10 | 91 | 98 | 70 | 219 | 14 | 115 | 90 | 108 | 50 | 45 | GN 911-M10-63 | 1222 |
| GN.50196 | GN 167-B42-2-SW | 42 | 11 | M10 | 91 | 98 | 70 | 219 | 14 | 115 | 90 | 108 | 50 | 45 | GN 911-M10-63 | 1214 |
| GN.50216 | GN 167-B45-2-SW | 45 | 11 | M10 | 91 | 98 | 70 | 219 | 14 | 115 | 90 | 108 | 50 | 45 | GN 911-M10-63 | 1194 |
| GN.50236 | GN 167-B48-2-SW | 48 | 11 | M10 | 91 | 98 | 70 | 219 | 14 | 115 | 90 | 108 | 50 | 45 | GN 911-M10-63 | 1172 |
| GN.50256 | GN 167-B50-2-SW | 50 | 11 | M10 | 91 | 98 | 70 | 219 | 14 | 115 | 90 | 108 | 50 | 45 | GN 911-M10-63 | 1154 |

GN 167-V

| Codice | Descrizione | s Foro quadro | d2 | d3 | k | l1 | l2 | l3 | t | x1 | x2 | y1 | y2 | y3 | d3 Kit di serraggio | ⚖ |
|----------|-----------------|------------------|----|-----|----|----|----|-----|----|-----|----|-----|----|----|------------------------|------|
| GN.50311 | GN 167-V20-2-BL | 20x20 | 7 | M8 | 58 | 69 | 46 | 146 | 7 | 75 | 60 | 72 | 35 | 30 | GN 911-M8-40 | 398 |
| GN.50331 | GN 167-V25-2-BL | 25x25 | 7 | M8 | 58 | 69 | 46 | 146 | 7 | 75 | 60 | 72 | 35 | 30 | GN 911-M8-40 | 374 |
| GN.50351 | GN 167-V30-2-BL | 30x30 | 7 | M8 | 58 | 69 | 46 | 146 | 7 | 75 | 60 | 72 | 35 | 30 | GN 911-M8-40 | 368 |
| GN.50371 | GN 167-V40-2-BL | 40x40 | 11 | M10 | 91 | 98 | 70 | 219 | 14 | 115 | 90 | 108 | 50 | 45 | GN 911-M10-63 | 1260 |
| GN.50391 | GN 167-V45-2-BL | 45x45 | 11 | M10 | 91 | 98 | 70 | 219 | 14 | 115 | 90 | 108 | 50 | 45 | GN 911-M10-63 | 1148 |
| GN.50411 | GN 167-V50-2-BL | 50x50 | 11 | M10 | 91 | 98 | 70 | 219 | 14 | 115 | 90 | 108 | 50 | 45 | GN 911-M10-63 | 1048 |
| GN.50316 | GN 167-V20-2-SW | 20x20 | 7 | M8 | 58 | 69 | 46 | 146 | 7 | 75 | 60 | 72 | 35 | 30 | GN 911-M8-40 | 398 |
| GN.50336 | GN 167-V25-2-SW | 25x25 | 7 | M8 | 58 | 69 | 46 | 146 | 7 | 75 | 60 | 72 | 35 | 30 | GN 911-M8-40 | 374 |
| GN.50356 | GN 167-V30-2-SW | 30x30 | 7 | M8 | 58 | 69 | 46 | 146 | 7 | 75 | 60 | 72 | 35 | 30 | GN 911-M8-40 | 368 |
| GN.50376 | GN 167-V40-2-SW | 40x40 | 11 | M10 | 91 | 98 | 70 | 219 | 14 | 115 | 90 | 108 | 50 | 45 | GN 911-M10-63 | 1260 |
| GN.50396 | GN 167-V45-2-SW | 45x45 | 11 | M10 | 91 | 98 | 70 | 219 | 14 | 115 | 90 | 108 | 50 | 45 | GN 911-M10-63 | 1148 |
| GN.50416 | GN 167-V50-2-SW | 50x50 | 11 | M10 | 91 | 98 | 70 | 219 | 14 | 115 | 90 | 108 | 50 | 45 | GN 911-M10-63 | 1048 |